



Brazos River Authority

Quarterly Investment Report

For the Quarter Ended

August 31, 2014

Prepared by

Valley View Consulting, L.L.C.

The investment portfolio of the Brazos River Authority is in compliance with the Public Funds Investment Act and the Authority's Investment Policy and Investment Strategy Statements.

Chief Financial Officer

Cash and Investment Manager

Accounting Manager

These reports were compiled using information provided by the Brazos River Authority. No procedures were performed to test the accuracy or completeness of this information. The market values included in these reports were obtained by Valley View Consulting, L.L.C. from sources believed to be accurate and represent proprietary valuation. Due to market fluctuations these levels are not necessarily reflective of current liquidation values. Yield calculations are not determined using standard performance formulas, are not representative of total return yields and do not account for investment advisor fees.

Strategy Summary:

The Federal Open Market Committee (FOMC) maintained the Fed Funds target range between 0.00% and 0.25% (actual Fed Funds traded <10 bps). The FOMC continued tapering the Quantitative Easing (QE3) program to \$25 billion per month. Tapering is anticipated to eliminate the program in October. Second quarter 2014 GDP was a strong 4.2% and first quarter was revised up to (2.1%). Employment data remains key as the FOMC focuses on wage growth, under-employment and overall participation. The US stock markets again touched new highs. International economical and political struggles weigh on US interest rates. Financial institution deposit yields generally provide the best interest earnings opportunity, although spreads to security yields have tightened.

Quarter End Results by Investment Category:

Asset Type	May 31, 2014		August 31, 2014		Ave. Yield
	Book Value	Market Value	Book Value	Market Value	
Demand/Pools/MMMF	\$ 18,056,096	\$ 18,056,096	\$ 18,702,811	\$ 18,702,811	0.35%
Securities/CDs	56,881,182	56,882,000	56,225,871	56,226,404	0.69%
Totals	\$ 74,937,278	\$ 74,938,096	\$ 74,928,682	\$ 74,929,215	

Average Yield for Current Quarter (1)	
Total Portfolio	0.60%
Average Yield 1 year Treasury Note	0.12%

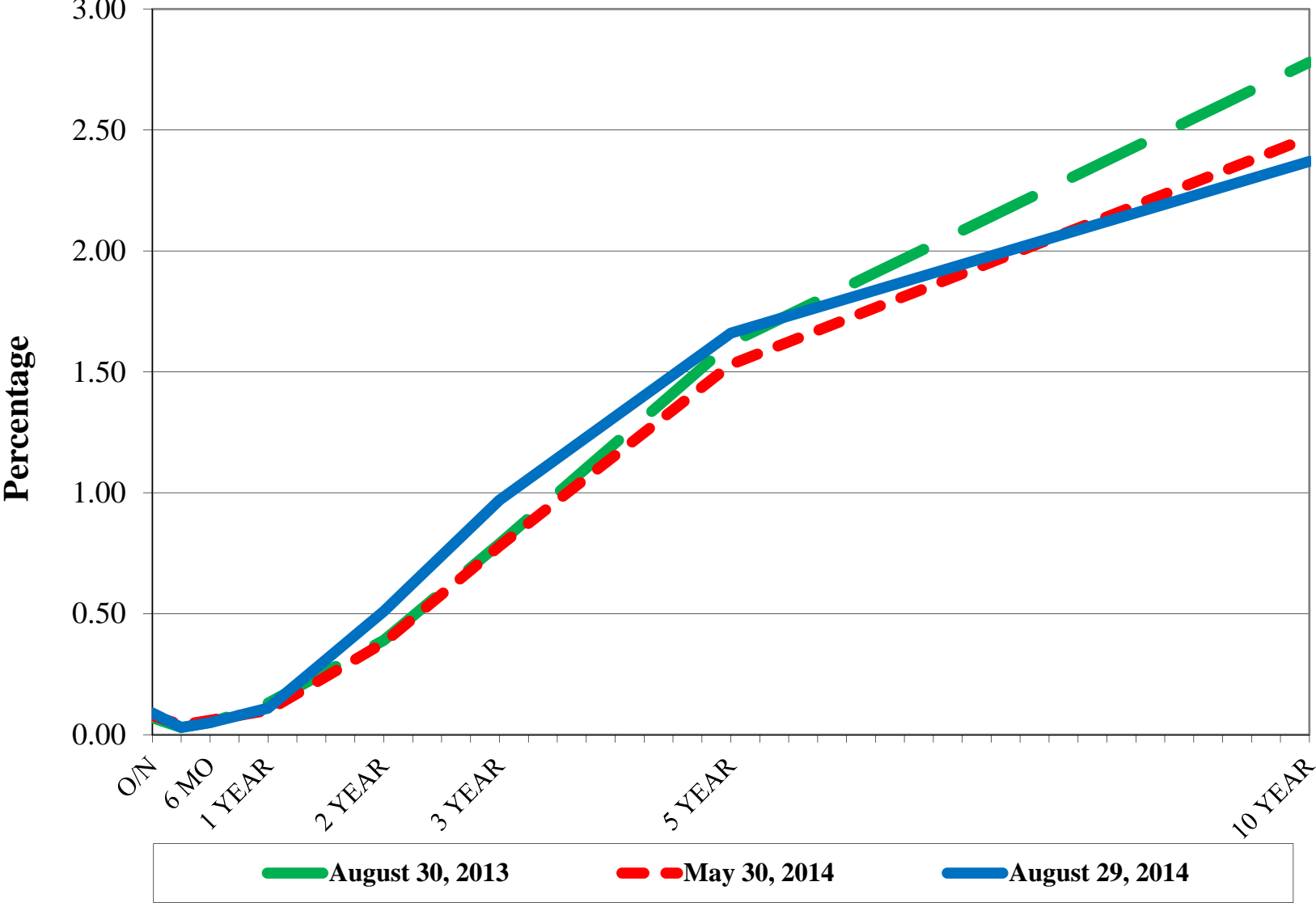
Fiscal Year-to-Date Average Yield (2)	
Total Portfolio	0.58%
Average Yield 1 year Treasury Note	0.12%

Interest Income	
Quarter	\$ 112,038
Fiscal Year to Date	\$ 485,057

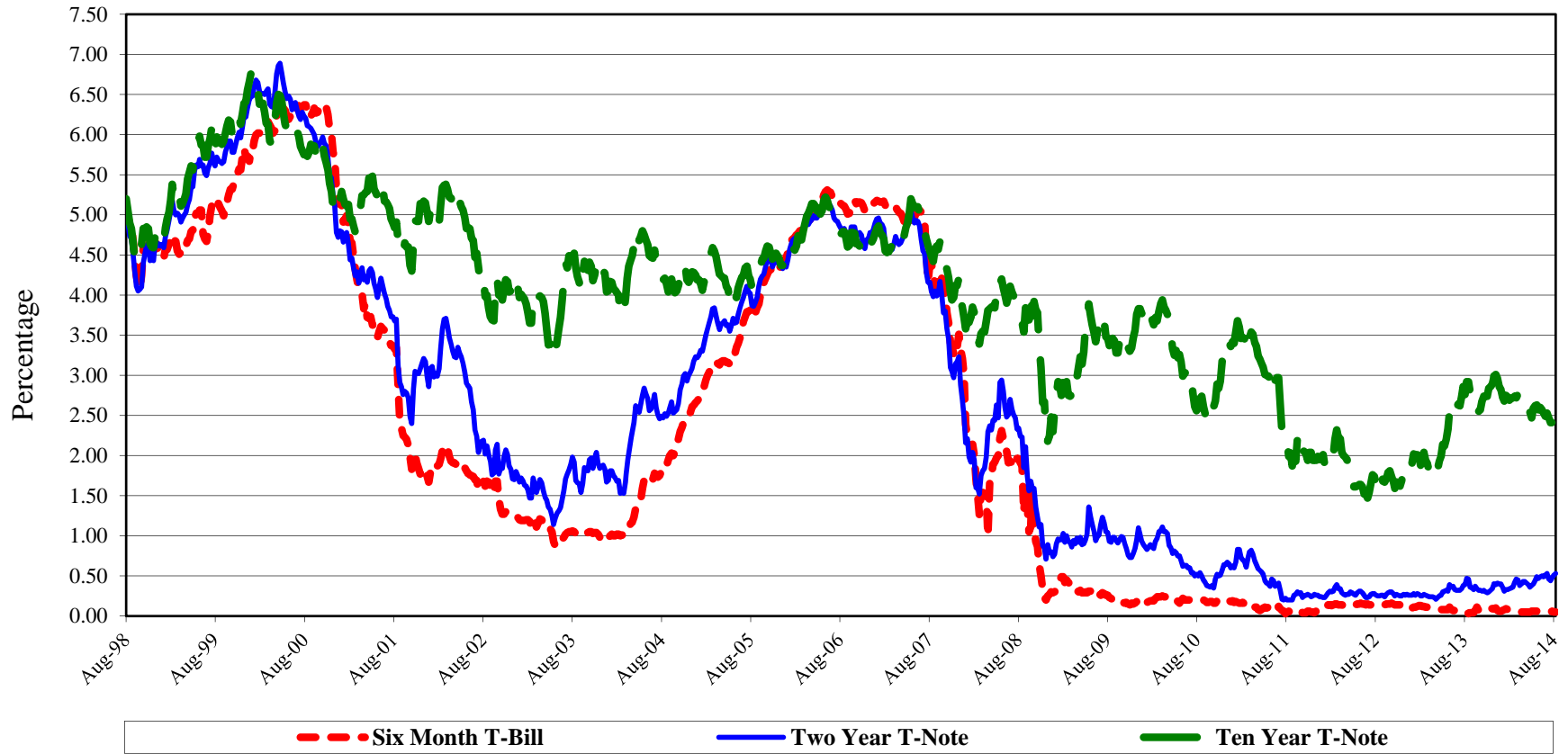
(1) Average Yield for Current Quarter is calculated using quarter end report yield and adjusted book values and does not reflect a total return analysis or account for advisory fees.

(2) Fiscal Year-to-Date Average Yields calculated using quarter end report yields and adjusted book values and does not reflect a total return analysis or account for advisory fees.

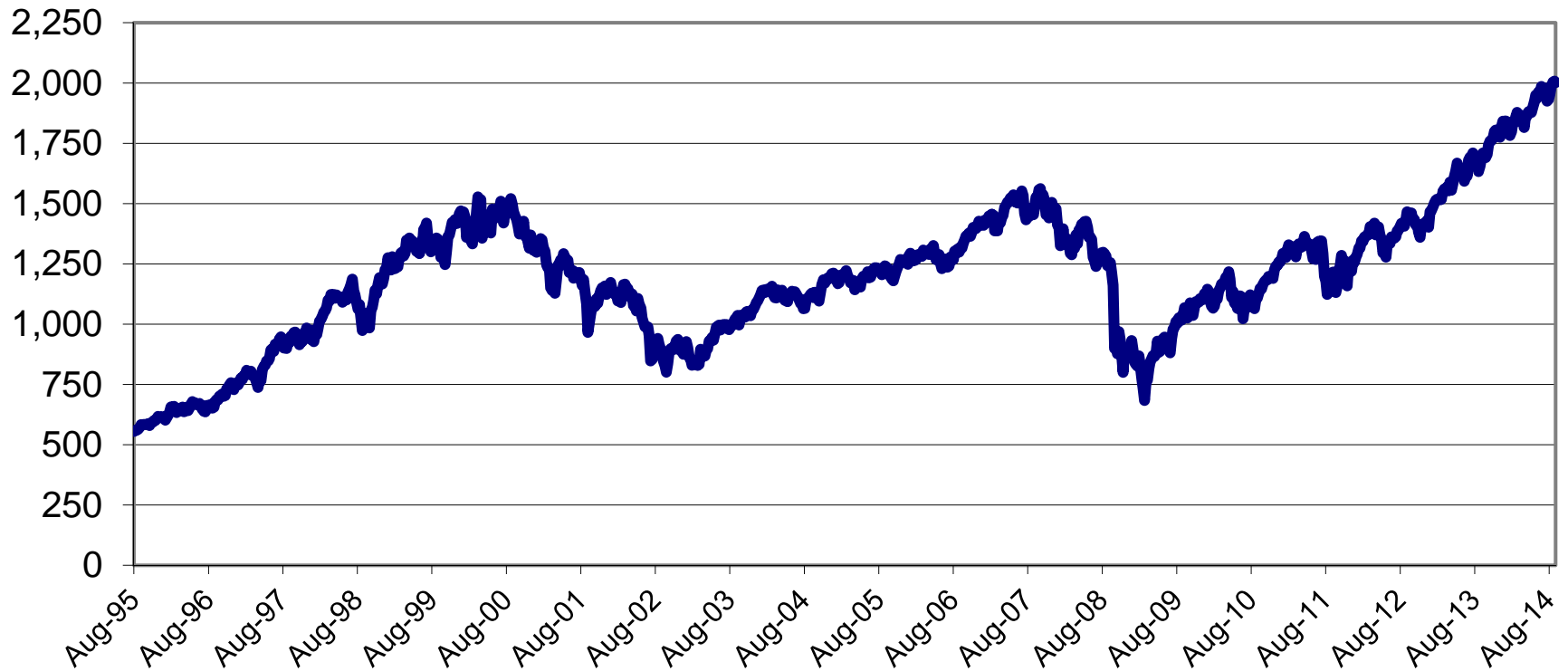
Treasury Yield Curves



US Treasury Historical Yields



S&P 500



Detail of Investment Holdings August 31, 2014

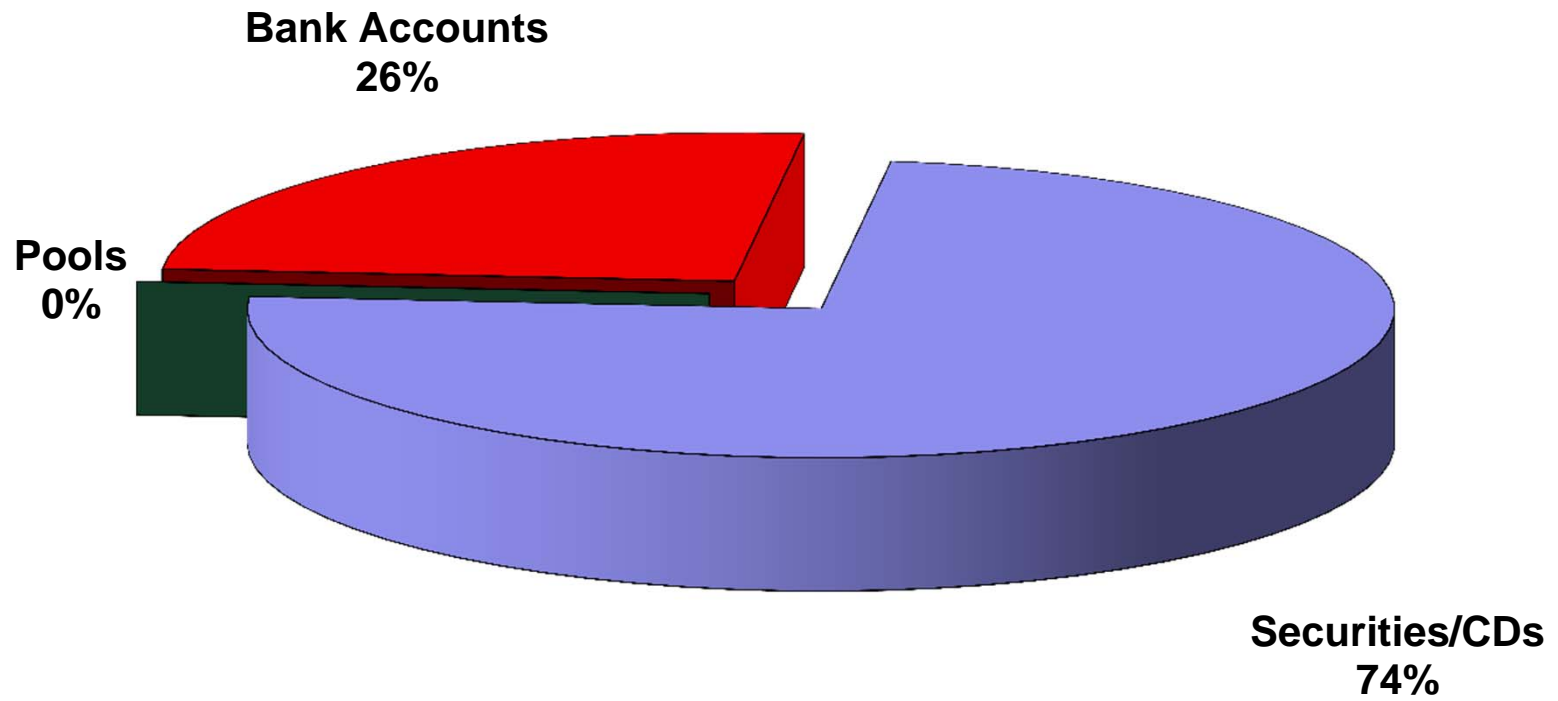
Description	Ratings	Coupon/ YTM	Maturity Date	Settlement Date	Call Date	Original Face/ Par Value	Purchased Value	Book Value	Market Price	Market Value	Life (days)	Yield
Demand		0.00%	09/01/14	08/31/14		\$ (240,798)	\$ (240,798)	\$ (240,798)	1.000	\$ (240,798)	1	0.00%
BBVA Compass RFB Deposit		0.00%	09/01/14	08/31/14		64,965	64,965	64,965	1.000	64,965	1	0.00%
BBVA Compass Checking		0.36%	09/01/14	08/31/14		2,350,949	2,350,949	2,350,949	1.000	2,350,949	1	0.36%
BBVA Compass Payroll		0.36%	09/01/14	08/31/14		4,895	4,895	4,895	1.000	4,895	1	0.36%
BBVA Compass Savings		0.36%	09/01/14	08/31/14		14,935,644	14,935,644	14,935,644	1.000	14,935,644	1	0.36%
BBVA Compass Employee Benefits		0.36%	09/01/14	08/31/14		13,779	13,779	13,779	1.000	13,779	1	0.36%
Graham Savings		0.25%	09/01/14	08/31/14		9,298	9,298	9,298	1.000	9,298	1	0.25%
SSB MMA		0.19%	09/01/14	08/31/14		1,559,473	1,559,473	1,559,473	1.000	1,559,473	1	0.19%
TexPool	AAAm	0.04%	09/01/14	08/31/14		4,607	4,607	4,607	1.000	4,607	1	0.04%
Comerica Bank CD		0.58%	09/24/14	09/24/12		1,011,167	1,011,167	1,011,167	100.000	1,011,167	24	0.58%
Comerica Bank CD		0.58%	10/09/14	10/09/12		2,021,370	2,021,370	2,021,370	100.000	2,021,370	39	0.58%
Independent Bank CD		0.65%	10/22/14	10/22/12		5,057,086	5,057,086	5,057,086	100.000	5,057,086	52	0.65%
Comerica Bank CD		0.57%	12/26/14	12/26/12		1,009,538	1,009,538	1,009,538	100.000	1,009,538	117	0.57%
Frisco TX EDC Bond	AA-/Aa3	2.00%	02/15/15	09/20/12		500,000	513,645	502,587	100.624	503,120	168	0.85%
Comerica Bank CD		0.52%	04/29/15	04/29/13		2,058,287	2,058,287	2,058,287	100.000	2,058,287	241	0.52%
Comerica Bank CD		0.53%	05/15/15	05/16/13		2,013,313	2,013,313	2,013,313	100.000	2,013,313	257	0.53%
Southside Bank CD		0.50%	06/08/15	09/16/13		1,003,744	1,003,744	1,003,744	100.000	1,003,744	281	0.50%
Independent Bank CDARS		0.40%	06/11/15	03/13/14		1,703,207	1,703,207	1,703,207	100.000	1,703,207	284	0.40%
Alliance Bank CD		0.75%	07/20/15	07/18/14		3,000,000	3,000,000	3,000,000	100.000	3,000,000	323	0.75%
Comerica Bank CD		0.55%	08/14/15	08/14/13		2,024,668	2,024,668	2,024,668	100.000	2,024,668	348	0.55%
Alliance Bank CD		1.00%	09/02/15	09/02/13		3,611,886	3,611,886	3,611,886	100.000	3,611,886	367	1.00%
Comerica Bank CD		0.68%	12/16/15	09/16/13		2,012,480	2,012,480	2,012,480	100.000	2,012,480	472	0.68%
Comerica Bank CD		0.62%	01/07/16	10/07/13		2,010,352	2,010,352	2,010,352	100.000	2,010,352	494	0.62%
Comerica Bank CD		0.45%	01/25/16	04/23/14		1,001,505	1,001,505	1,001,505	100.000	1,001,505	512	0.45%
Comerica Bank CD		0.56%	02/22/16	02/20/14		2,005,560	2,005,560	2,005,560	100.000	2,005,560	540	0.56%
Comerica Bank CD		0.56%	03/04/16	03/04/14		2,004,699	2,004,699	2,004,699	100.000	2,004,699	551	0.56%
Comerica Bank CD		0.69%	04/07/16	10/07/13		2,011,523	2,011,523	2,011,523	100.000	2,011,523	585	0.69%
Comerica Bank CD		0.60%	04/25/16	04/23/14		4,008,028	4,008,028	4,008,028	100.000	4,008,028	603	0.60%
Comerica Bank CD		0.64%	05/23/16	05/23/14		4,006,456	4,006,456	4,006,456	100.000	4,006,456	631	0.64%
BankTexas CD		0.70%	06/24/16	06/24/14		4,004,681	4,004,681	4,004,681	100.000	4,004,681	663	0.70%
Alliance Bank CD		0.95%	07/18/16	07/18/14		3,126,287	3,126,287	3,126,287	100.000	3,126,287	687	0.95%
Alliance Bank CD		0.95%	08/15/16	08/15/14		2,007,521	2,007,521	2,007,521	100.000	2,007,521	715	0.95%
Comerica Bank CD		1.08%	09/16/16	09/16/13		1,009,927	1,009,927	1,009,927	100.000	1,009,927	747	1.08%
Comerica Bank CD		0.96%	02/28/17	08/28/14		2,000,000	2,000,000	2,000,000	100.000	2,000,000	912	0.96%
						\$ 74,926,095	\$ 74,939,740	\$ 74,928,682		\$ 74,929,215	333	0.60%

(1) (2)

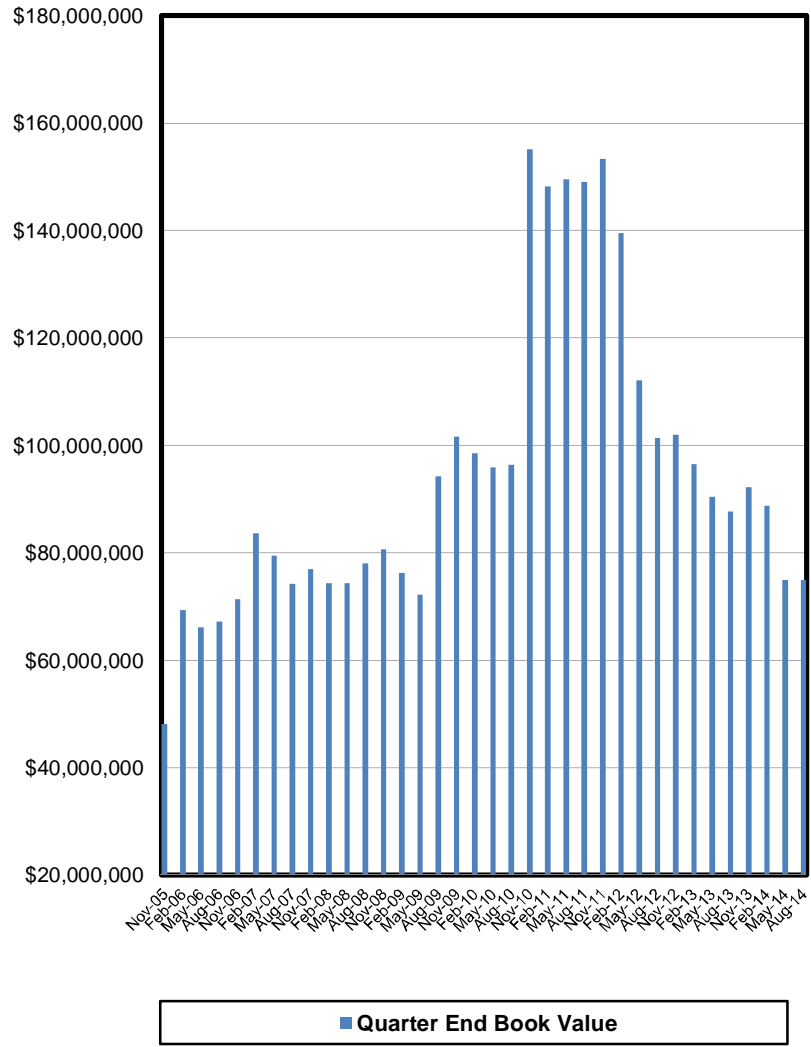
(1) **Weighted average life** - For purposes of calculating weighted average life bank, pool, and money market investments are assumed to mature the next business day.

(2) **Weighted average yield to maturity** - The weighted average yield to maturity is based on adjusted book value, realized and unrealized gains/losses and investment advisory fees are not considered. The yield for the reporting month is used for bank, pool, and money market investments.

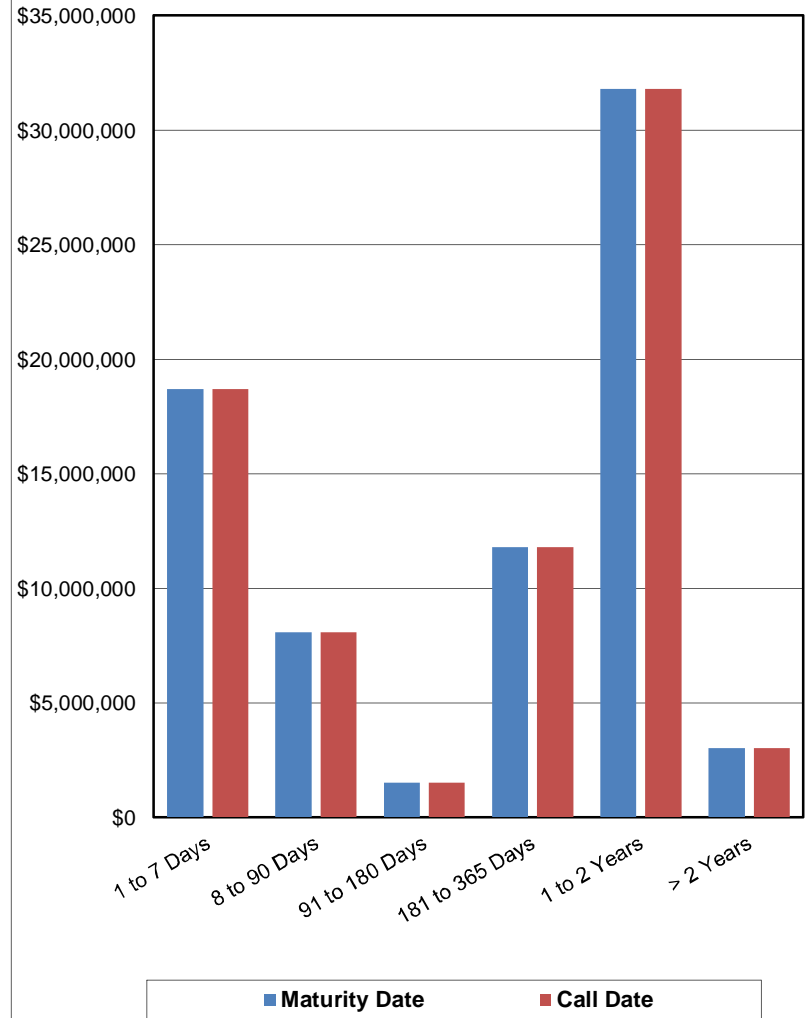
Portfolio Composition



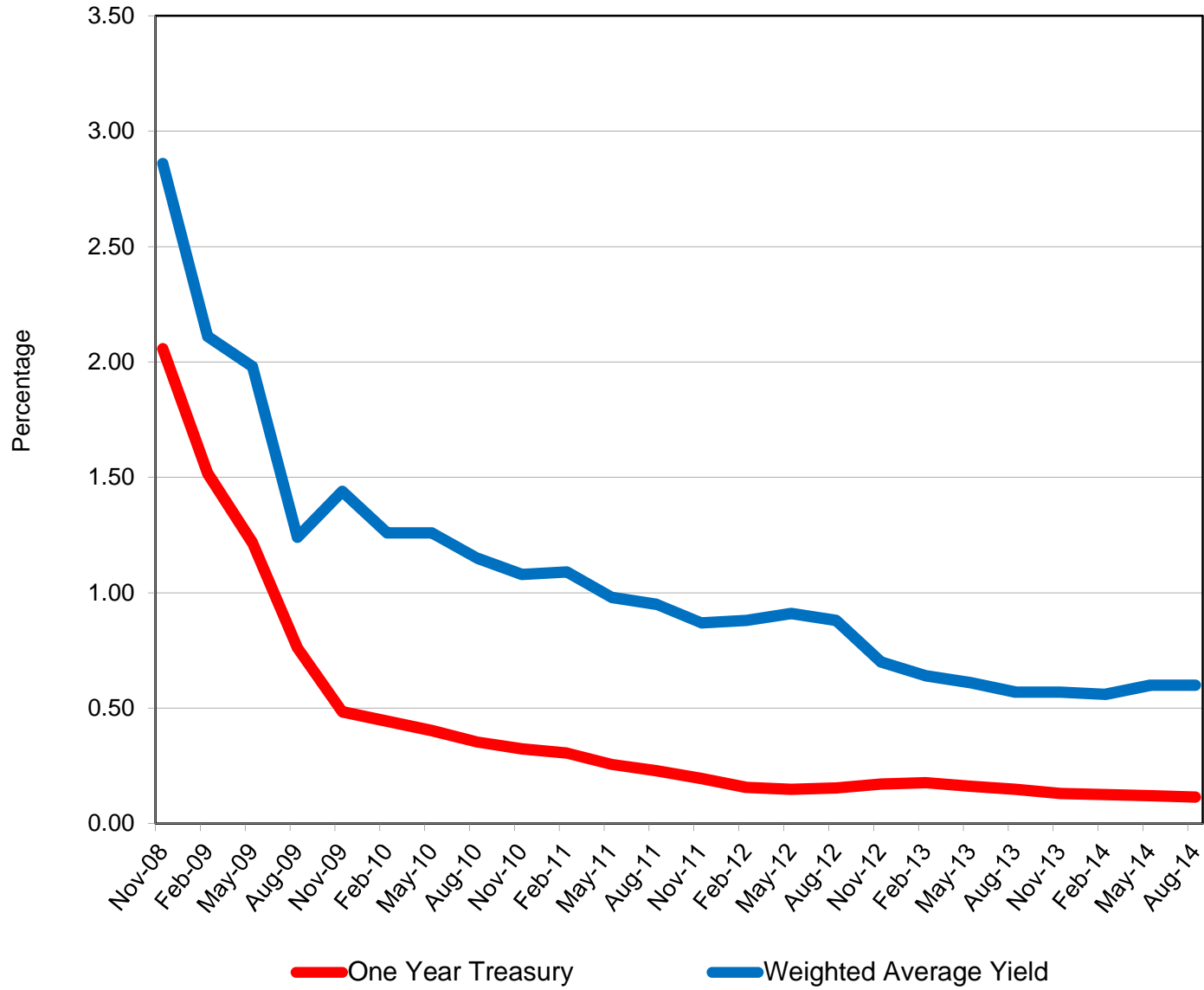
Total Portfolio



Book Value Maturity Distribution



Total Portfolio Performance



Book Value Comparison

Description	Rating	Coupon/ Yield	Maturity Date	May 31, 2014				August 31, 2014	
				Original Face/ Par Value	Book Value	Purchase/ Adjustment	Maturity/Call/ Adjustment	Original Face/ Par Value	Book Value
Demand		0.00%	09/01/14	\$ (282,029)	\$ (282,029)	\$ 41,232	\$ -	\$ (240,798)	\$ (240,798)
BBVA Compass RFB Deposit		0.00%	09/01/14	-	-	64,965	-	64,965	64,965
BBVA Compass Checking		0.36%	09/01/14	72,190	72,190	2,278,760	-	2,350,949	2,350,949
BBVA Compass Payroll		0.36%	09/01/14	2,919	2,919	1,976	-	4,895	4,895
BBVA Compass Savings		0.36%	09/01/14	16,632,302	16,632,302	-	(1,696,658)	14,935,644	14,935,644
BBVA Compass Employee Benefits		0.36%	09/01/14	(1,803)	(1,803)	15,581	-	13,779	13,779
Graham Savings		0.25%	09/01/14	69,150	69,150	-	(59,853)	9,298	9,298
SSB MMA		0.19%	09/01/14	1,558,761	1,558,761	712	-	1,559,473	1,559,473
TexPool	AAAm	0.04%	09/01/14	4,607	4,607	-	-	4,607	4,607
Comerica Bank CD		0.52%	06/23/14	4,033,009	4,033,009	-	(4,033,009)	-	-
Alliance Bank CD		1.05%	07/18/14	6,111,168	6,111,168	-	(6,111,168)	-	-
Alliance Bank CD		0.75%	08/15/14	1,005,620	1,005,620	-	(1,005,620)	-	-
Southside Bank CD		0.65%	08/18/14	633,147	633,147	-	(633,147)	-	-
Southside Bank CD		0.65%	08/28/14	3,075,867	3,075,867	-	(3,075,867)	-	-
Comerica Bank CD		0.58%	09/24/14	1,009,690	1,009,690	1,477	-	1,011,167	1,011,167
Comerica Bank CD		0.58%	10/09/14	2,018,417	2,018,417	2,952	-	2,021,370	2,021,370
Independent Bank CD		0.65%	10/22/14	5,048,904	5,048,904	8,182	-	5,057,086	5,057,086
Comerica Bank CD		0.57%	12/26/14	1,008,089	1,008,089	1,449	-	1,009,538	1,009,538
Frisco TX EDC Bond	AA-/Aa3	2.00%	02/15/15	500,000	504,007	-	(1,420)	500,000	502,587
Comerica Bank CD		0.52%	04/29/15	2,055,591	2,055,591	2,695	-	2,058,287	2,058,287
Comerica Bank CD		0.53%	05/15/15	2,010,626	2,010,626	2,687	-	2,013,313	2,013,313
Southside Bank CD		0.50%	06/08/15	1,002,481	1,002,481	1,263	-	1,003,744	1,003,744
Independent Bank CDARS		0.40%	06/11/15	1,701,491	1,701,491	1,716	-	1,703,207	1,703,207
Alliance Bank CD		0.75%	07/20/15	-	-	3,000,000	-	3,000,000	3,000,000
Comerica Bank CD		0.55%	08/14/15	2,021,863	2,021,863	2,804	-	2,024,668	2,024,668
Alliance Bank CD		1.00%	09/02/15	3,602,805	3,602,805	9,081	-	3,611,886	3,611,886
Comerica Bank CD		0.68%	12/16/15	2,009,035	2,009,035	3,445	-	2,012,480	2,012,480
Comerica Bank CD		0.62%	01/07/16	2,007,213	2,007,213	3,138	-	2,010,352	2,010,352
Comerica Bank CD		0.45%	01/25/16	1,000,370	1,000,370	1,135	-	1,001,505	1,001,505
Comerica Bank CD		0.56%	02/22/16	2,002,732	2,002,732	2,828	-	2,005,560	2,005,560
Comerica Bank CD		0.56%	03/04/16	2,001,872	2,001,872	2,827	-	2,004,699	2,004,699
Comerica Bank CD		0.69%	04/07/16	2,008,029	2,008,029	3,494	-	2,011,523	2,011,523
Comerica Bank CD		0.60%	04/25/16	4,001,973	4,001,973	6,055	-	4,008,028	4,008,028
Comerica Bank CD		0.64%	05/23/16	4,000,000	4,000,000	6,456	-	4,006,456	4,006,456
BankTexas CD		0.70%	06/24/16	-	-	4,004,681	-	4,004,681	4,004,681
Alliance Bank CD		0.95%	07/18/16	-	-	3,126,287	-	3,126,287	3,126,287
Alliance Bank CD		0.95%	08/15/16	-	-	2,007,521	-	2,007,521	2,007,521
Comerica Bank CD		1.08%	09/16/16	1,007,183	1,007,183	2,744	-	1,009,927	1,009,927
Comerica Bank CD		0.96%	02/28/17	-	-	2,000,000	-	2,000,000	2,000,000
				\$ 74,933,271	\$ 74,937,278	\$ 16,608,146	\$ (16,616,742)	\$ 74,926,095	\$ 74,928,682

Market Value Comparison

Description	Rating	Coupon/ Discount	Maturity Date	May 31, 2014			August 31, 2014		
				Original Face/ Par Value	Market Value	Qtr to Qtr Change	Original Face/ Par Value	Market Value	
Demand		0.00%	09/01/14	\$ (282,029)	\$ (282,029)	\$ 41,232	\$ (240,798)	\$ (240,798)	
BBVA Compass RFB Deposit		0.00%	09/01/14	-	-	64,965	64,965	64,965	
BBVA Compass Checking		0.36%	09/01/14	72,190	72,190	2,278,760	2,350,949	2,350,949	
BBVA Compass Payroll		0.36%	09/01/14	2,919	2,919	1,976	4,895	4,895	
BBVA Compass Savings		0.36%	09/01/14	16,632,302	16,632,302	(1,696,658)	14,935,644	14,935,644	
BBVA Compass Employee Benefits		0.36%	09/01/14	(1,803)	(1,803)	15,581	13,779	13,779	
Graham Savings		0.25%	09/01/14	69,150	69,150	(59,853)	9,298	9,298	
SSB MMA		0.19%	09/01/14	1,558,761	1,558,761	712	1,559,473	1,559,473	
TexPool	AAAm	0.04%	09/01/14	4,607	4,607	-	4,607	4,607	
Comerica Bank CD		0.52%	06/23/14	4,033,009	4,033,009	(4,033,009)	-	-	
Alliance Bank CD		1.05%	07/18/14	6,111,168	6,111,168	(6,111,168)	-	-	
Alliance Bank CD		0.75%	08/15/14	1,005,620	1,005,620	(1,005,620)	-	-	
Southside Bank CD		0.65%	08/18/14	633,147	633,147	(633,147)	-	-	
Southside Bank CD		0.65%	08/28/14	3,075,867	3,075,867	(3,075,867)	-	-	
Comerica Bank CD		0.58%	09/24/14	1,009,690	1,009,690	1,477	1,011,167	1,011,167	
Comerica Bank CD		0.58%	10/09/14	2,018,417	2,018,417	2,952	2,021,370	2,021,370	
Independent Bank CD		0.65%	10/22/14	5,048,904	5,048,904	8,182	5,057,086	5,057,086	
Comerica Bank CD		0.57%	12/26/14	1,008,089	1,008,089	1,449	1,009,538	1,009,538	
Frisco TX EDC Bond	AA-/Aa3	2.00%	02/15/15	500,000	504,825	(1,705)	500,000	503,120	
Comerica Bank CD		0.52%	04/29/15	2,055,591	2,055,591	2,695	2,058,287	2,058,287	
Comerica Bank CD		0.53%	05/15/15	2,010,626	2,010,626	2,687	2,013,313	2,013,313	
Southside Bank CD		0.50%	06/08/15	1,002,481	1,002,481	1,263	1,003,744	1,003,744	
Independent Bank CDARS		0.40%	06/11/15	1,701,491	1,701,491	1,716	1,703,207	1,703,207	
Alliance Bank CD		0.75%	07/20/15	-	-	3,000,000	3,000,000	3,000,000	
Comerica Bank CD		0.55%	08/14/15	2,021,863	2,021,863	2,804	2,024,668	2,024,668	
Alliance Bank CD		1.00%	09/02/15	3,602,805	3,602,805	9,081	3,611,886	3,611,886	
Comerica Bank CD		0.68%	12/16/15	2,009,035	2,009,035	3,445	2,012,480	2,012,480	
Comerica Bank CD		0.62%	01/07/16	2,007,213	2,007,213	3,138	2,010,352	2,010,352	
Comerica Bank CD		0.45%	01/25/16	1,000,370	1,000,370	1,135	1,001,505	1,001,505	
Comerica Bank CD		0.56%	02/22/16	2,002,732	2,002,732	2,828	2,005,560	2,005,560	
Comerica Bank CD		0.56%	03/04/16	2,001,872	2,001,872	2,827	2,004,699	2,004,699	
Comerica Bank CD		0.69%	04/07/16	2,008,029	2,008,029	3,494	2,011,523	2,011,523	
Comerica Bank CD		0.60%	04/25/16	4,001,973	4,001,973	6,055	4,008,028	4,008,028	
Comerica Bank CD		0.64%	05/23/16	4,000,000	4,000,000	6,456	4,006,456	4,006,456	
BankTexas CD		0.70%	06/24/16	-	-	4,004,681	4,004,681	4,004,681	
Alliance Bank CD		0.95%	07/18/16	-	-	3,126,287	3,126,287	3,126,287	
Alliance Bank CD		0.95%	08/15/16	-	-	2,007,521	2,007,521	2,007,521	
Comerica Bank CD		1.08%	09/16/16	1,007,183	1,007,183	2,744	1,009,927	1,009,927	
Comerica Bank CD		0.96%	02/28/17	-	-	2,000,000	2,000,000	2,000,000	
				\$ 74,933,271	\$ 74,938,096	\$ (8,881)	\$ 74,926,095	\$ 74,929,215	

**Allocation - Book Value
August 31, 2014**

Description	Portfolio Total	Current Operating	Operating Reserve	Bond Proceeds	Bond Reserve	Debt Service	Repair and Replacement
Demand	\$ (240,798)	\$ (240,798)	\$ -	\$ -	\$ -	\$ -	\$ -
BBVA Compass RFB Deposit	64,965	64,965	-	-	-	-	-
BBVA Compass Checking	2,350,949	2,350,949	-	-	-	-	-
BBVA Compass Payroll	4,895	4,895	-	-	-	-	-
BBVA Compass Savings	14,935,644	3,017,145	5,500,000	3,063,916	7,186	2,772,598	574,800
BBVA Compass Employee Benefits	13,779	13,779	-	-	-	-	-
Graham Savings	9,298	9,298	-	-	-	-	-
SSB MMA	1,559,473	-	1,559,473	-	-	-	-
TexPool	4,607	4,607	-	-	-	-	-
09/24/14	1,011,167	-	1,011,167	-	-	-	-
10/09/14	2,021,370	-	2,021,370	-	-	-	-
10/22/14	5,057,086	-	5,057,086	-	-	-	-
12/26/14	1,009,538	-	-	-	-	-	1,009,538
02/15/15	502,587	502,587	-	-	-	-	-
04/29/15	2,058,287	-	2,058,287	-	-	-	-
05/15/15	2,013,313	-	2,013,313	-	-	-	-
06/08/15	1,003,744	797,977	-	-	205,768	-	-
06/11/15	1,703,207	203,383	-	-	-	-	1,499,824
07/20/15	3,000,000	3,000,000	-	-	-	-	-
08/14/15	2,024,668	-	1,019,154	-	-	-	1,005,514
09/02/15	3,611,886	-	2,201,388	-	1,410,497	-	-
12/16/15	2,012,480	-	1,006,240	-	-	-	1,006,240
01/07/16	2,010,352	-	2,010,352	-	-	-	-
01/25/16	1,001,505	-	1,001,505	-	-	-	-
02/22/16	2,005,560	-	2,005,560	-	-	-	-
03/04/16	2,004,699	-	2,004,699	-	-	-	-
04/07/16	2,011,523	-	2,011,523	-	-	-	-
04/25/16	4,008,028	-	4,008,028	-	-	-	-
05/23/16	4,006,456	-	4,006,456	-	-	-	-
06/24/16	4,004,681	-	4,004,681	-	-	-	-
07/18/16	3,126,287	-	3,126,287	-	-	-	-
08/15/16	2,007,521	-	1,383,521	-	624,000	-	-
09/16/16	1,009,927	-	1,009,927	-	-	-	-
02/28/17	2,000,000	-	2,000,000	-	-	-	-
Totals	\$ 74,928,682	\$ 9,728,786	\$ 52,020,016	\$ 3,063,916	\$ 2,247,451	\$ 2,772,598	\$ 5,095,916

**Allocation - Market Value
August 31, 2014**

Description	Portfolio Total	Current Operating	Operating Reserve	Bond Proceeds	Bond Reserve	Debt Service	Repair and Replacement
Demand	\$ (240,798)	\$ (240,798)	\$ -	\$ -	\$ -	\$ -	\$ -
BBVA Compass RFB Deposit	64,965	64,965	-	-	-	-	-
BBVA Compass Checking	2,350,949	2,350,949	-	-	-	-	-
BBVA Compass Payroll	4,895	4,895	-	-	-	-	-
BBVA Compass Savings	14,935,644	3,017,145	5,500,000	3,063,916	7,186	2,772,598	574,800
BBVA Compass Employee Benefits	13,779	13,779	-	-	-	-	-
Graham Savings	9,298	9,298	-	-	-	-	-
SSB MMA	1,559,473	-	1,559,473	-	-	-	-
TexPool	4,607	4,607	-	-	-	-	-
09/24/14	1,011,167	-	1,011,167	-	-	-	-
10/09/14	2,021,370	-	2,021,370	-	-	-	-
10/22/14	5,057,086	-	5,057,086	-	-	-	-
12/26/14	1,009,538	-	-	-	-	-	1,009,538
02/15/15	503,120	503,120	-	-	-	-	-
04/29/15	2,058,287	-	2,058,287	-	-	-	-
05/15/15	2,013,313	-	2,013,313	-	-	-	-
06/08/15	1,003,744	797,977	-	-	205,768	-	-
06/11/15	1,703,207	203,383	-	-	-	-	1,499,824
07/20/15	3,000,000	3,000,000	-	-	-	-	-
08/14/15	2,024,668	-	1,019,154	-	-	-	1,005,514
09/02/15	3,611,886	-	2,201,388	-	1,410,497	-	-
12/16/15	2,012,480	-	1,006,240	-	-	-	1,006,240
01/07/16	2,010,352	-	2,010,352	-	-	-	-
01/25/16	1,001,505	-	1,001,505	-	-	-	-
02/22/16	2,005,560	-	2,005,560	-	-	-	-
03/04/16	2,004,699	-	2,004,699	-	-	-	-
04/07/16	2,011,523	-	2,011,523	-	-	-	-
04/25/16	4,008,028	-	4,008,028	-	-	-	-
05/23/16	4,006,456	-	4,006,456	-	-	-	-
06/24/16	4,004,681	-	4,004,681	-	-	-	-
07/18/16	3,126,287	-	3,126,287	-	-	-	-
08/15/16	2,007,521	-	1,383,521	-	624,000	-	-
09/16/16	1,009,927	-	1,009,927	-	-	-	-
02/28/17	2,000,000	-	2,000,000	-	-	-	-
Totals	\$ 74,929,215	\$ 9,729,319	\$ 52,020,016	\$ 3,063,916	\$ 2,247,451	\$ 2,772,598	\$ 5,095,916

**Allocation - Book Value
May 31, 2014**

Description	Portfolio Total	Current Operating	Operating Reserve	Bond Proceeds	Bond Reserve	Debt Service	Repair and Replacement
Demand	\$ (282,029)	\$ (282,029)	\$ -	\$ -	\$ -	\$ -	\$ -
BBVA Compass Checking	72,190	72,190	-	-	-	-	-
BBVA Compass Payroll	2,919	2,919	-	-	-	-	-
BBVA Compass Savings	16,632,302	1,193,949	9,000,000	3,270,449	10,054	2,558,645	599,204
BBVA Compass Employee Benefits	(1,803)	(1,803)	-	-	-	-	-
Graham Savings	69,150	69,150	-	-	-	-	-
SSB MMA	1,558,761	-	1,558,761	-	-	-	-
TexPool	4,607	4,607	-	-	-	-	-
06/23/14	4,033,009	-	4,033,009	-	-	-	-
07/18/14	6,111,168	3,055,584	3,055,584	-	-	-	-
08/15/14	1,005,620	-	1,005,620	-	-	-	-
08/18/14	633,147	-	-	-	633,147	-	-
08/28/14	3,075,867	-	3,075,867	-	-	-	-
09/24/14	1,009,690	-	1,009,690	-	-	-	-
10/09/14	2,018,417	-	2,018,417	-	-	-	-
10/22/14	5,048,904	-	5,048,904	-	-	-	-
12/26/14	1,008,089	-	-	-	-	-	1,008,089
02/15/15	504,007	504,007	-	-	-	-	-
04/29/15	2,055,591	-	2,055,591	-	-	-	-
05/15/15	2,010,626	-	2,010,626	-	-	-	-
06/08/15	1,002,481	796,972	-	-	205,509	-	-
06/11/15	1,701,491	203,178	-	-	-	-	1,498,313
08/14/15	2,021,863	-	1,017,742	-	-	-	1,004,121
09/02/15	3,602,805	-	2,195,853	-	1,406,951	-	-
12/16/15	2,009,035	-	1,004,517	-	-	-	1,004,517
01/07/16	2,007,213	-	2,007,213	-	-	-	-
01/25/16	1,000,370	-	1,000,370	-	-	-	-
02/22/16	2,002,732	-	2,002,732	-	-	-	-
03/04/16	2,001,872	-	2,001,872	-	-	-	-
04/07/16	2,008,029	-	2,008,029	-	-	-	-
04/25/16	4,001,973	-	4,001,973	-	-	-	-
05/23/16	4,000,000	-	4,000,000	-	-	-	-
09/16/16	1,007,183	-	1,007,183	-	-	-	-
Totals	\$ 74,937,278	\$ 5,618,723	\$ 56,119,555	\$ 3,270,449	\$ 2,255,661	\$ 2,558,645	\$ 5,114,245

**Allocation - Market Value
May 31, 2014**

Description	Portfolio Total	Current Operating	Operating Reserve	Bond Proceeds	Bond Reserve	Debt Service	Repair and Replacement
Demand	\$ (282,029)	\$ (282,029)	\$ -	\$ -	\$ -	\$ -	\$ -
BBVA Compass Checking	72,190	72,190	-	-	-	-	-
BBVA Compass Payroll	2,919	2,919	-	-	-	-	-
BBVA Compass Savings	16,632,302	1,193,949	9,000,000	3,270,449	10,054	2,558,645	599,204
BBVA Compass Employee Benefits	(1,803)	(1,803)	-	-	-	-	-
Graham Savings	69,150	69,150	-	-	-	-	-
SSB MMA	1,558,761	-	1,558,761	-	-	-	-
TexPool	4,607	4,607	-	-	-	-	-
06/23/14	4,033,009	-	4,033,009	-	-	-	-
07/18/14	6,111,168	3,055,584	3,055,584	-	-	-	-
08/15/14	1,005,620	-	1,005,620	-	-	-	-
08/18/14	633,147	-	-	-	633,147	-	-
08/28/14	3,075,867	-	3,075,867	-	-	-	-
09/24/14	1,009,690	-	1,009,690	-	-	-	-
10/09/14	2,018,417	-	2,018,417	-	-	-	-
10/22/14	5,048,904	-	5,048,904	-	-	-	-
12/26/14	1,008,089	-	-	-	-	-	1,008,089
02/15/15	504,825	504,825	-	-	-	-	-
04/29/15	2,055,591	-	2,055,591	-	-	-	-
05/15/15	2,010,626	-	2,010,626	-	-	-	-
06/08/15	1,002,481	796,972	-	-	205,509	-	-
06/11/15	1,701,491	203,178	-	-	-	-	1,498,313
08/14/15	2,021,863	-	1,017,742	-	-	-	1,004,121
09/02/15	3,602,805	-	2,195,853	-	1,406,951	-	-
12/16/15	2,009,035	-	1,004,517	-	-	-	1,004,517
01/07/16	2,007,213	-	2,007,213	-	-	-	-
01/25/16	1,000,370	-	1,000,370	-	-	-	-
02/22/16	2,002,732	-	2,002,732	-	-	-	-
03/04/16	2,001,872	-	2,001,872	-	-	-	-
04/07/16	2,008,029	-	2,008,029	-	-	-	-
04/25/16	4,001,973	-	4,001,973	-	-	-	-
05/23/16	4,000,000	-	4,000,000	-	-	-	-
09/16/16	1,007,183	-	1,007,183	-	-	-	-
Totals	\$ 74,938,096	\$ 5,619,542	\$ 56,119,555	\$ 3,270,449	\$ 2,255,661	\$ 2,558,645	\$ 5,114,245

Report Abbreviations

CD	Certificate of Deposit
CDARS	Certificate of Deposit Account Registry Service
Demand	Demand Deposit Bank Accounts
FFCB	Federal Farm Credit Bank
FHLB	Federal Home Loan Bank
FHLMC	Federal Home Loan Mortgage Corporation
FNMA	Federal National Mortgage Association
FRMAC	Farmer Agricultural Mortgage Corporation
FCDN	Federal Farm Credit Bank - Discount Note
FHDN	Federal Home Loan Bank - Discount Note
FMCDN	Federal Home Loan Mortgage Corporation - Discount Note
FNDN	Federal National Mortgage Association - Discount Note
FRMDN	Farmer Agricultural Mortgage Corporation - Discount Note
FNMA MBS	Federal National Mortgage Association - Mortgage Backed Security
MMA	Money Market Account
MMMF	Money Market Mutual Fund
NOW	Negotiable Order of Withdrawal Account